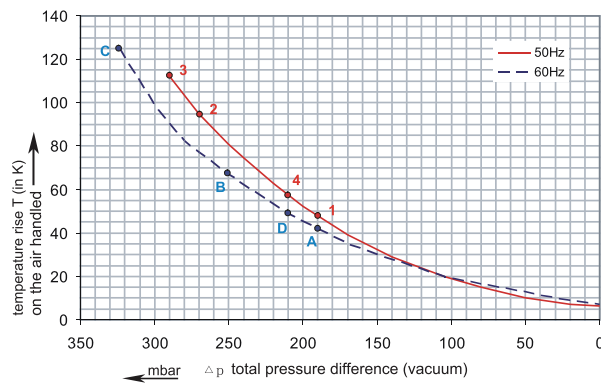
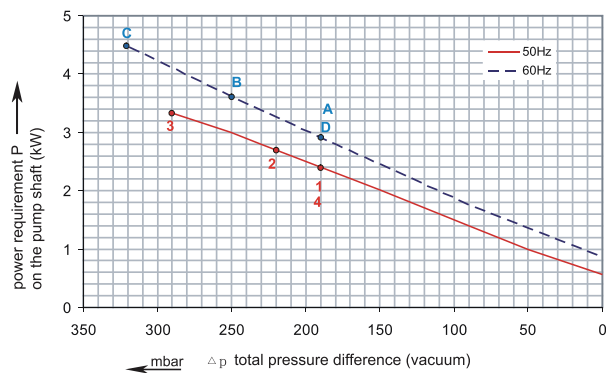
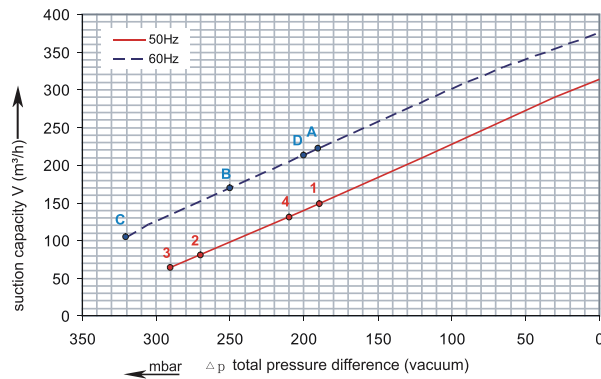


1RSC 38-50

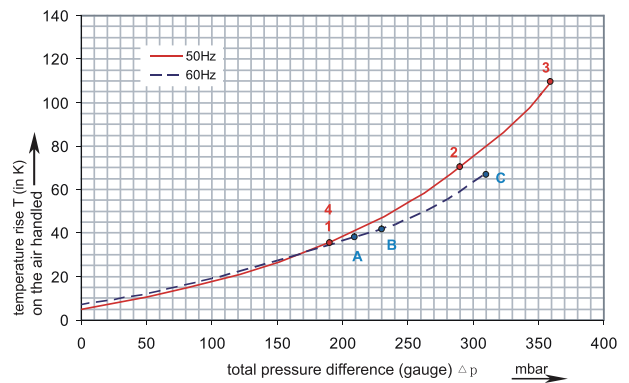
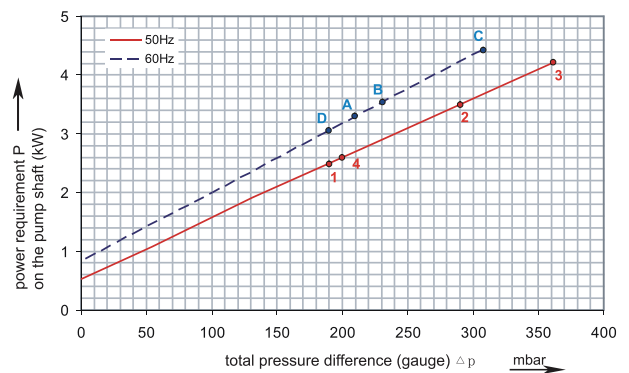
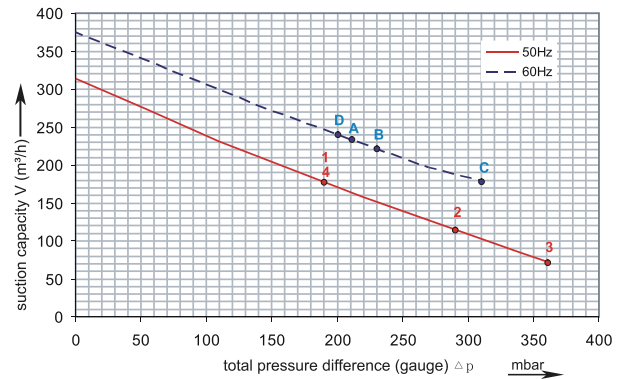
Performance curve for Vacuum pump



The performance curves are based on air at a temperature of 15 °C and an atmospheric pressure of 1013 mbar with a tolerance of +/- 10 %. The total pressure differences are valid for suction and ambient temperatures up to 25 °C. For other conditions please confer with us.

1RSC 38-50

Performance curve for Compressor

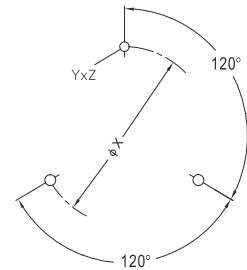
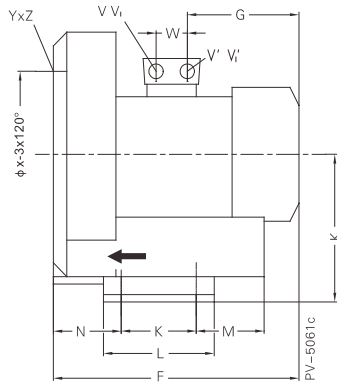
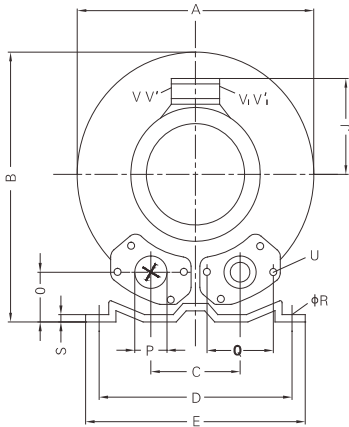


Each RSC type can be applied both as vacuum pump and compressor in continuous operation over the total stated performance curve range. The motors are available as standard for the input voltage range of 50 and 60 Hz and for protection category IP 55

RENOVA

1RSC 38-50

| Curve No. | Model | Freq. (Hz) | Rated power (KW) | Voltage (V) | Current (A) | Sound Level [dB(A)] | Weight (Kg) |
|-----------|----------------|------------|------------------|---------------------|--------------|---------------------|-------------|
| 1 | 1RSC38-50 2.2T | 50 | 2.2 | 200-240Δ / 345-415Y | 9.7Δ / 5.6Y | 69 | 30 |
| A | 1RSC38-50 2.2T | 60 | 2.55 | 220-275Δ / 380-480Y | 10.3Δ / 6.0Y | 72 | 30 |
| 2 | 1RSC38-50 3.0T | 50 | 3.0 | 200-240Δ / 345-415Y | 12.5Δ / 7.2Y | 69 | 36 |
| B | 1RSC38-50 3.0T | 60 | 3.45 | 220-275Δ / 380-480Y | 12.6Δ / 7.3Y | 72 | 36 |
| 3 | 1RSC38-50 4.0T | 50 | 4.0 | 345-415Δ / 600-720Y | 9.0Δ / 5.2Y | 69 | 40 |
| C | 1RSC38-50 4.0T | 60 | 4.6 | 380-480Δ / 660-720Y | 9.0Δ / 5.2Y | 72 | 40 |
| 4 | 1RSC38-50 2.2M | 50 | 2.2 | 115 / 230 | 25.6 / 12.8 | 72 | 30 |
| D | 1RSC38-50 2.2M | 60 | 2.55 | 115 / 230 | 25.6 / 12.8 | 74 | 30 |



| Model | A | B | C | D | E | F | G | H | J | K | L | M | N | O | ØP |
|----------------|-----|-----|-----|-----|-----|-----|-----|-----|-----|-----|-----|----|-----|----|----|
| 1RSC38-50 2.2T | 382 | 384 | 125 | 290 | 325 | 377 | 191 | 197 | 128 | 140 | 180 | 84 | 109 | 54 | 2" |
| 1RSC38-50 3.0T | 382 | 384 | 125 | 290 | 325 | 409 | 188 | 197 | 135 | 140 | 180 | 84 | 109 | 54 | 2" |
| 1RSC38-50 4.0T | 382 | 384 | 125 | 290 | 325 | 432 | 209 | 197 | 148 | 140 | 180 | 84 | 109 | 54 | 2" |
| 1RSC38-50 2.2M | 382 | 384 | 125 | 290 | 325 | 404 | 218 | 197 | 128 | 140 | 180 | 84 | 109 | 54 | 2" |

| Model | Q | ØR | S | U | YxZ | X-Holes | ØX |
|----------------|----|----|-----|-------|--------|--------------|-----|
| 1RSC38-50 2.2T | 83 | 15 | 4.5 | M8x17 | M10x20 | 0°/120°/240° | 240 |
| 1RSC38-50 3.0T | 83 | 15 | 4.5 | M8x17 | M10x20 | 0°/120°/240° | 240 |
| 1RSC38-50 4.0T | 83 | 15 | 4.5 | M8x17 | M10x20 | 0°/120°/240° | 240 |
| 1RSC38-50 2.2M | 83 | 15 | 4.5 | M8x17 | M10x20 | 0°/120°/240° | 240 |