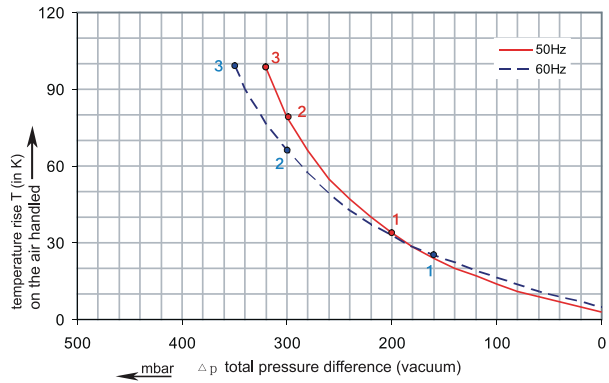
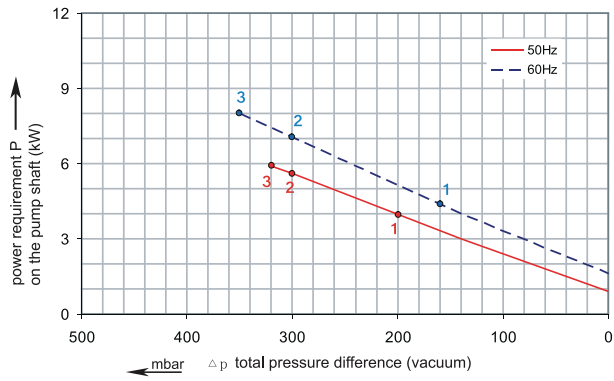
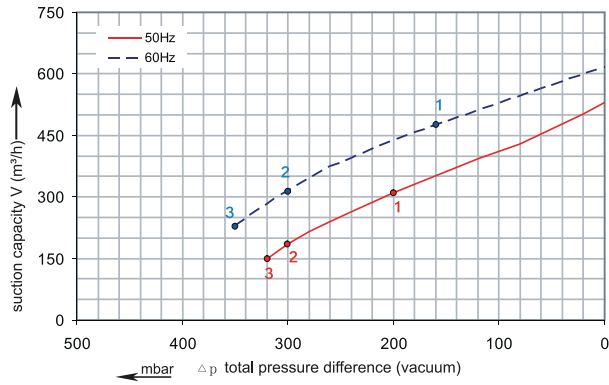


# RENOVA

## 1RSC 45-65

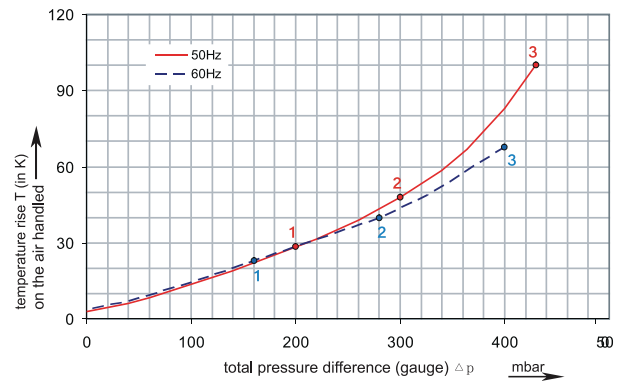
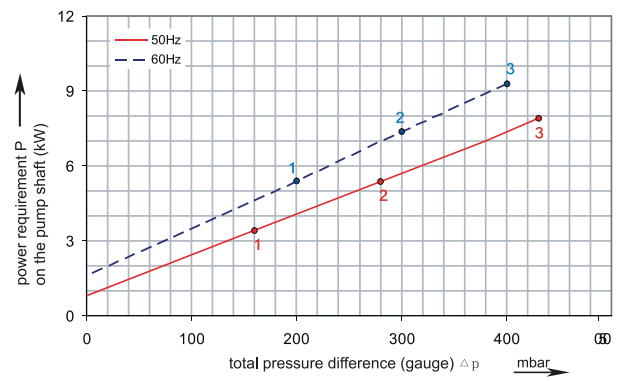
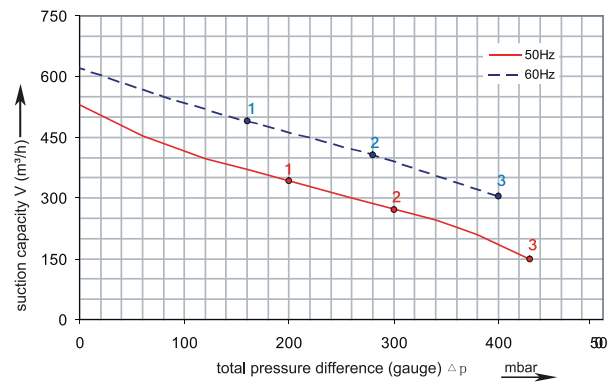
Performance curve for Vacuum pump



The performance curves are based on air at a temperature of 15 °C and an atmospheric pressure of 1013 mbar with a tolerance of +/- 10 %. The total pressure differences are valid for suction and ambient temperatures up to 25 °C. For other conditions please confer with us.

## 1RSC 45-65

Performance curve for Compressor

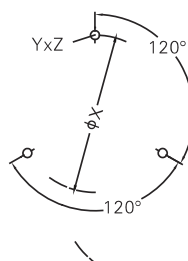
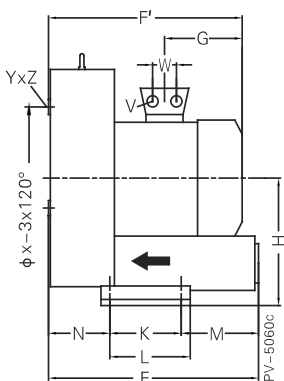
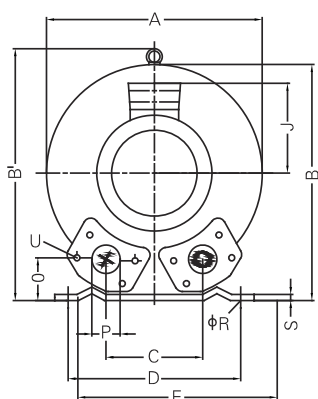
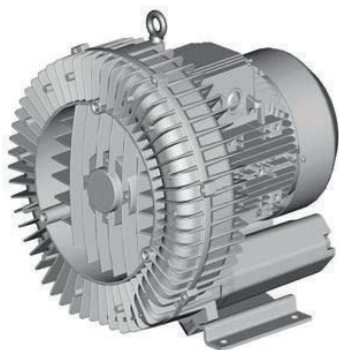


Each RSC type can be applied both as vacuum pump and compressor in continuous operation over the total stated performance curve range. The motors are available as standard for the input voltage range of 50 and 60 Hz and for protection category IP 55.

# RENOVA

## 1RSC 45-65

Curve No.	Model	Freq. (Hz)	Power (KW)	Max. Flow (m3/h)	Max. Vacuum (mbar)	Max. Pressure (mbar)	Voltage (V)	Current (A)	Inlet / Outlet	Noise (dBA)	Weight (Kg)
1	1RSC45/65 4.0T	50	4.0	530	-200	200	345-415Δ / 600-690Y	9.5Δ / 5.5Y	G 2½"	70	54
		60	4.6	620	-160	160	380-480Δ / 660-720Y	9.5Δ / 5.5Y		74	
2	1RSC45/65 5.5T	50	5.5	530	-300	300	345-415Δ / 600-690Y	13.3Δ / 7.7Y	G 2½"	70	63
		60	6.3	620	-300	280	380-480Δ / 660-720Y	13.3Δ / 7.7Y		74	
3	1RSC45/65 7.5T	50	7.5	530	-320	430	345-415Δ / 600-690Y	16.7Δ / 9.6Y	G 2½"	70	66
		60	8.6	620	-350	400	380-480Δ / 660-720Y	17.3Δ / 10.0Y		74	



Model	A	B	C	D	E	F	G	H	J	K	L	M	N	O	ØP
1RSC45/65 4.0T	451	461	152	356	394	450	230	240	148	170	217	140	124	65	2½"
1RSC45/65 5.5T	451	461	152	356	394	477	226	240	148	170	217	140	124	65	2½"
1RSC45/65 7.5T	451	461	152	356	394	477	226	240	148	170	217	140	124	65	2½"