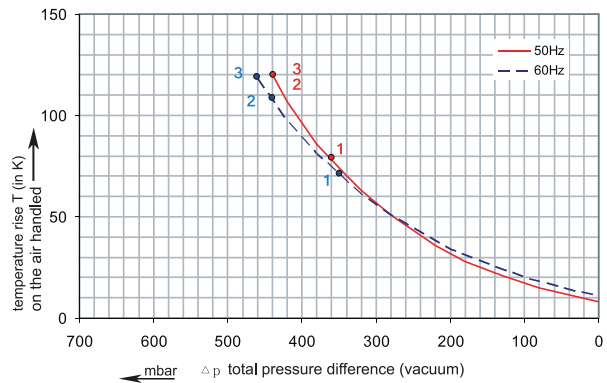
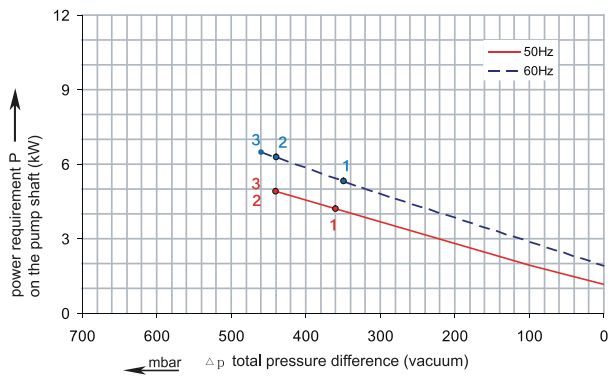
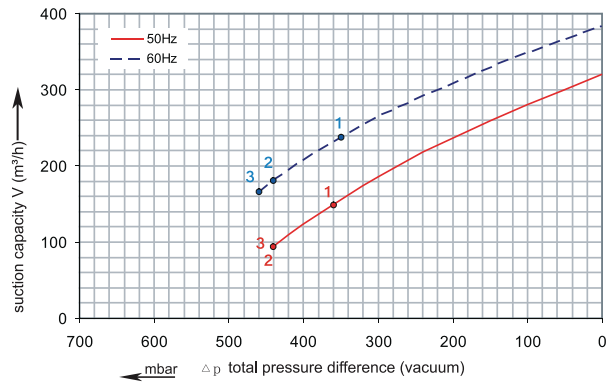


RENOVA

2RSC 43-50

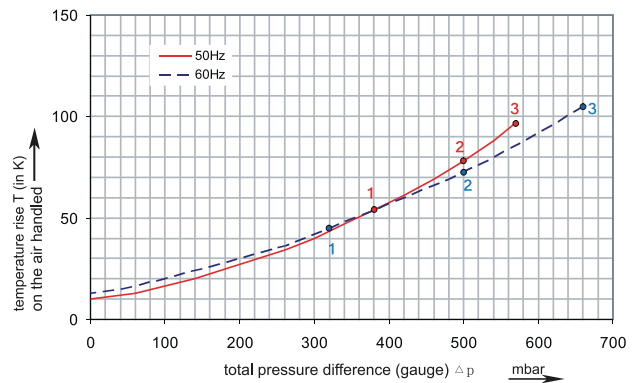
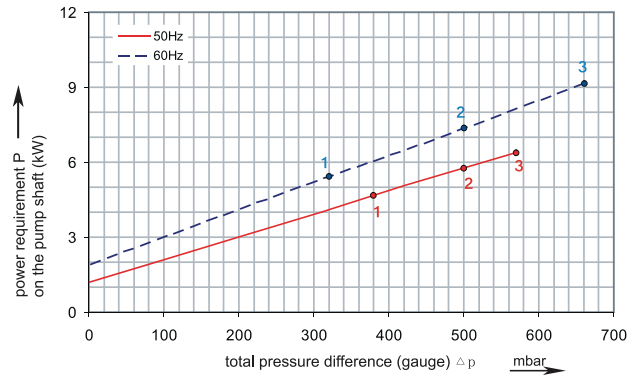
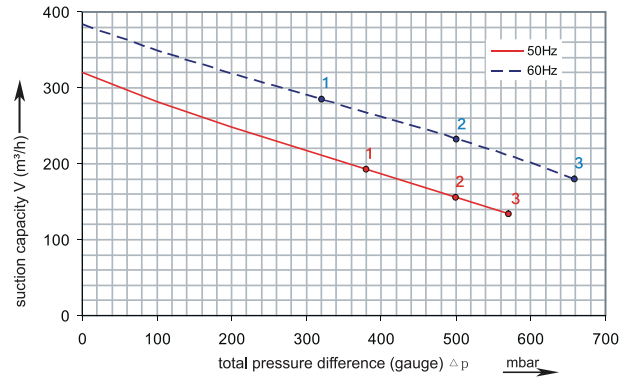
Performance curve for Vacuum pump



The performance curves are based on air at a temperature of 15 °C and an atmospheric pressure of 1013 mbar with a tolerance of +/- 10 %. The total pressure differences are valid for suction and ambient temperatures up to 25 °C. For other conditions please confer with us.

2RSC 43-50

Performance curve for Compressor

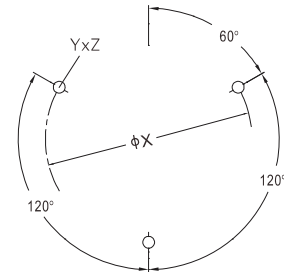
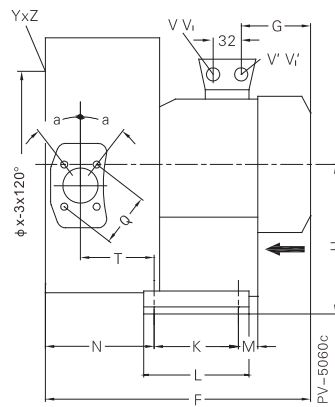
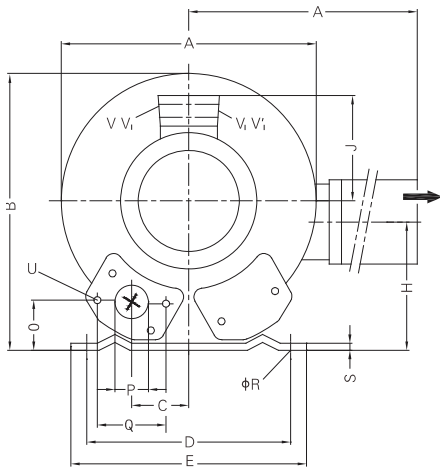


Each RSC type can be applied both as vacuum pump and compressor in continuous operation over the total stated performance curve range. The motors are available as standard for the input voltage range of 50 and 60 Hz and for protection category IP 55.

RENOVA

2RSC 43-50

Curve No.	Model	Freq. (Hz)	Power (KW)	Max. Flow (m3/h)	Max. Vacuum (mbar)	Max. Pressure (mbar)	Voltage (V)	Current (A)	Inlet / Outlet	Noise (dBA)	Weight (Kg)
1	2RSC43/50 4.0T	50	4.3	320	-360	380	345-415Δ / 600-690Y	10.0Δ / 5.8Y	G 2"	73	54
		60	4.8	380	-350	320	380-480Δ / 660-720Y	10.4Δ / 6.0Y		76	
2	2RSC43/50 5.5T	50	5.5	320	-440	500	345-415Δ / 600-690Y	13.3Δ / 7.7Y	G 2"	73	66
		60	6.3	380	-440	500	380-480Δ / 660-720Y	13.3Δ / 7.7Y		76	
3	2RSC43/50 7.5T	50	7.5	320	-440	570	345-415Δ / 600-690Y	16.7Δ / 9.6Y	G 2"	73	73
		60	8.6	380	-460	660	380-480Δ / 660-720Y	17.3Δ / 10.0Y		76	



Model	A	A'	B	C	D	E	F	G	H	H'	J	K	L	M	N	O	ØP
2RSC43/50 4.0T	426	426	410	63	290	325	526	209	197	162	148	140	180	84	205	53	2"
2RSC43/50 5.5T	426	426	410	154	290	325	571	226	197	162	167	140	180	200	205	94	2"
2RSC43/50 7.5T	426	426	410	154	290	325	571	226	197	162	167	140	180	200	205	94	2"