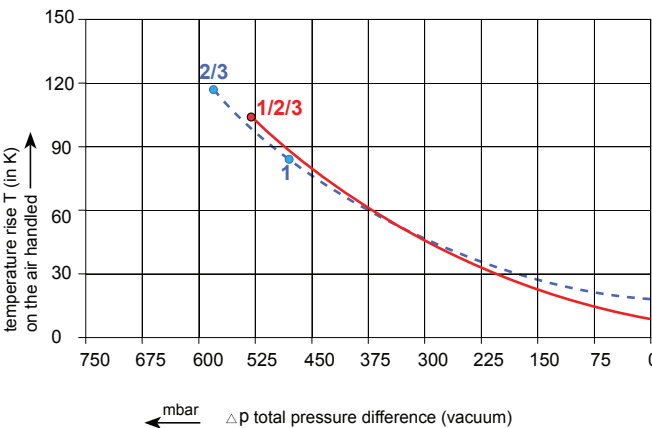
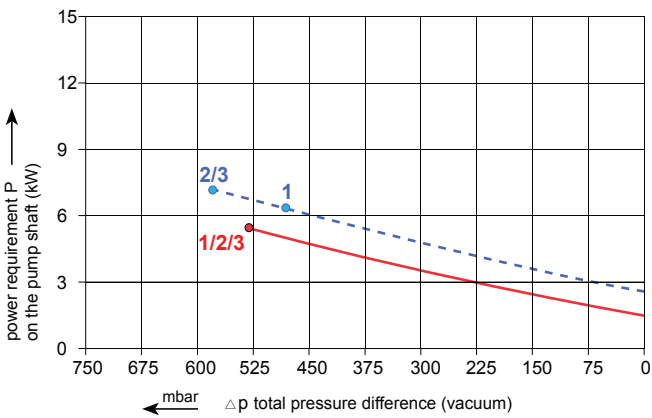
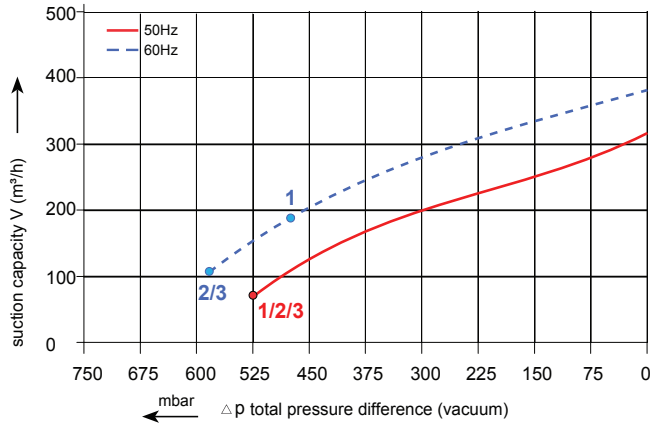


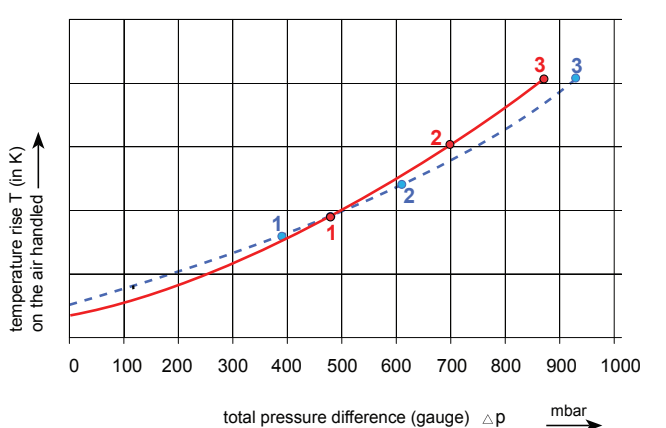
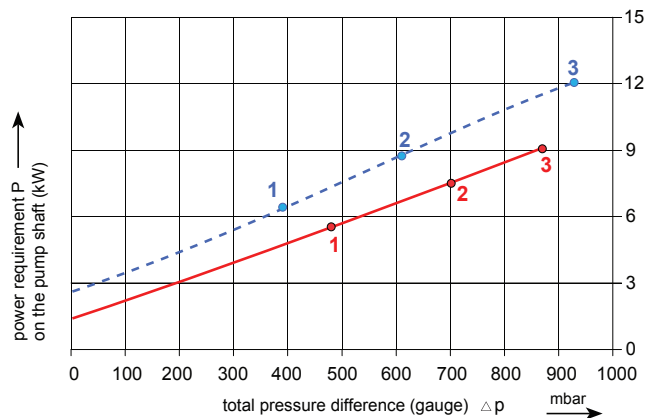
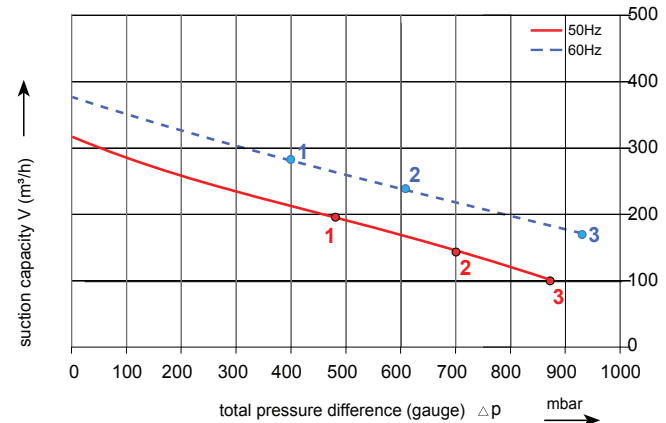
RENOVA

3RSC 350-2/65

Performance curve for Vacuum pump



3RSC 350-2/65



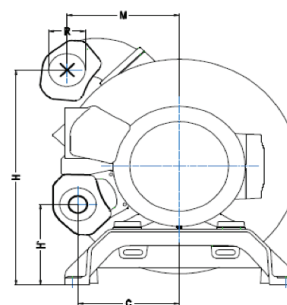
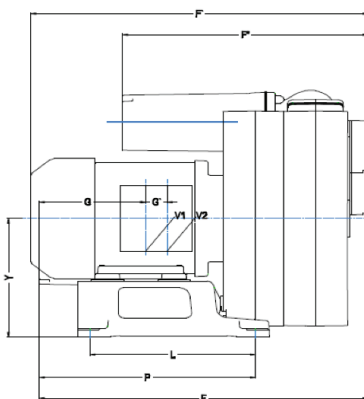
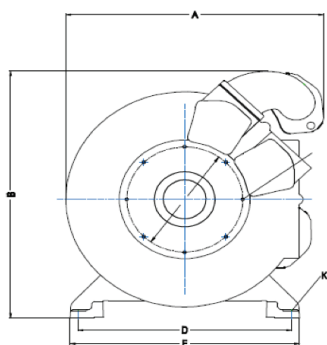
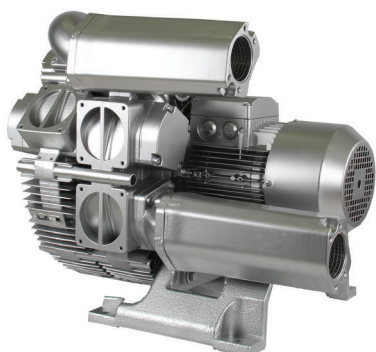
The performance curves are based on air at a temperature of 15 °C and atmospheric pressure of 1013 mbar with a tolerance of +/- 10 %. The total pressure differences are valid for suction and ambient temperatures up to 25 °C. For other conditions please confer with us.

Each 3RSC type can be applied both as vacuum pump and compressor in continuous operation over the total stated performance curve range. The motors are available as standard for the input voltage range of 50 and 60 Hz and for protection category IP 55.

RENOVA

3RSC 350-2/65

Curve No.	Model	Freq. (Hz)	Power (KW)	Max. Flow (m3/h)	Max. Vacuum (mbar)	Max. Pressure (mbar)	Voltage (V)	Current (A)	Inlet / Outlet	Noise (dBA)	Weight (Kg)
1	3RSC350-2/65 5.5T	50	5.5	320	-530	480	350-450Δ / 610-725Y	11.1Δ / 6.4Y	G 2½"	69	100
		60	6.3	380	-480	390	400-500Δ / 690-725Y	11.0Δ / 6.4Y		73	
2	3RSC350-2/65 7.5T	50	7.5	320	-530	700	350-450Δ / 610-725Y	15.0Δ / 8.7Y	G 2½"	69	126
		60	8.6	380	-580	610	400-500Δ / 690-725Y	15.1Δ / 8.8Y		73	
3	3RSC350-2/65 11T	50	11	320	-530	870	350-450Δ / 610-725Y	22.0Δ / 12.7Y	G 2½"	72	132
		60	12.6	380	-580	930	400-500Δ / 690-725Y	22.0Δ / 12.9Y		76	



Model	A	B	C	D	E	F	F'	G	H	H'	ØK	L	M	P	ØR
3RSC350-2/65 5.5T	507	536	199	420	450	646	663	210	466	175	14.5	325	220	425	2½"
3RSC350-2/65 7.5T	507	536	199	420	450	646	698	210	466	175	14.5	325	220	425	2½"
3RSC350-2/65 11T	507	564	199	420	450	646	753	184	494	203	14.5	325	220	425	2½"