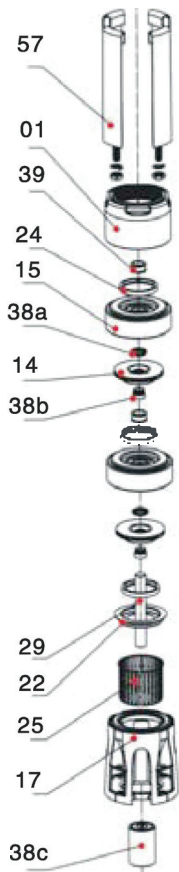


**Stainless Steel construction designed for years of trouble free operation. Close coupled to NEMA standard submersible motor. Designed for flow rates up to 120 m<sup>3</sup>/h & head up to 310 meters.**

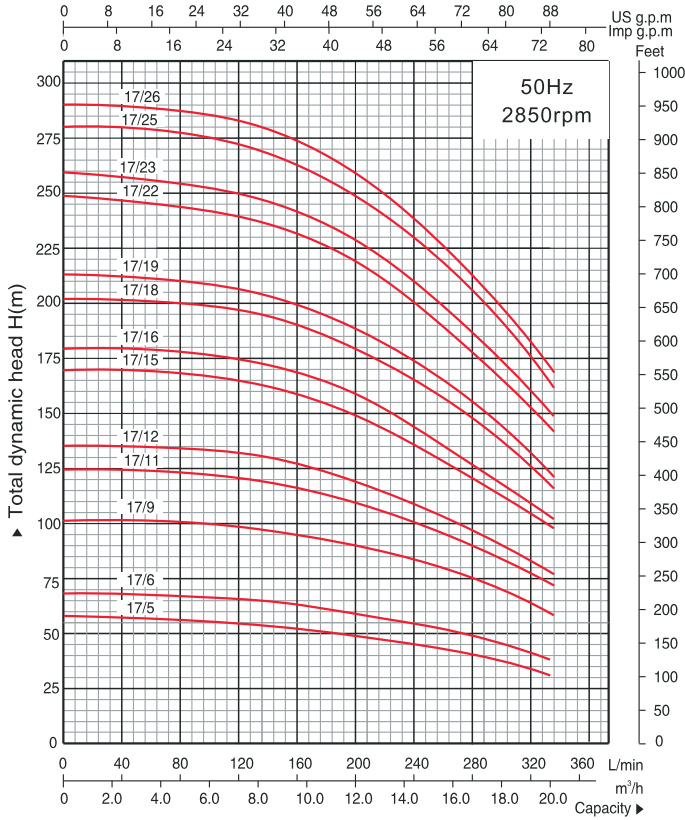


### Materials of construction

Item No.	Part name	Material
01	Discharge head	AISI304SS
14	Impeller	AISI304SS
15	Diffuser & Casing	AISI304SS
17	Adapter	AISI304SS
22	Neck ring seat	AISI304SS
24	Neck ring	NBR
25	Strainer	AISI304SS
29	Shaft	AISI420SS
38a,b	Shaft sleeve	AISI304SS
38c	Coupling spline	AISI420SS
39	Bush bearing	NBR
57	Rod & Screw	AISI304SS

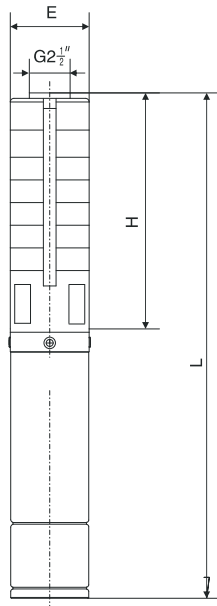


## Performance curves & table



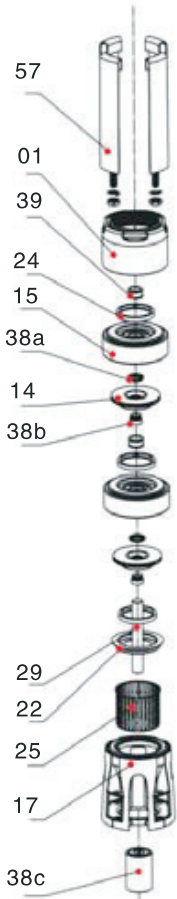
Model(50Hz) Three phase	Motor		l/min m³/h	Capacity						
	Model	Power kW HP		0	67	133	200	267	300	333
6SP17/5	4SD	3 4	Head (m)	56	55.4	54	49	42	37	31
6SP17/6		4 5.5		68	67	65	59.5	50.5	45	38
6SP17/9		5.5 7.5		101	100	97	89	76	68	58
6SP17/11		7.5 10		124	123	120	110	94	84	72
6SP17/12		7.5 10		135	134	132	119	102	90	77
6SP17/9		5.5 7.5		101	100	97	89	76	68	58
6SP17/11	6SD	7.5 10	Head (m)	124	123	120	109.5	94	84	72
6SP17/12		7.5 10		135	134	132	119	102	90	77
6SP17/15		9.2 12.5		168	167	162	148	127	113	97
6SP17/16		9.2 12.5		179	178	172	158	134	120	102
6SP17/18		11 15		202	200	195	179	152	136	116
6SP17/19		11 15		213	210	205	188	160	142	121
6SP17/22		13 17.5		247	245	238	219	186	165	142
6SP17/23		13 17.5		257	255	248	228	194	172	148
6SP17/25		15 20		280	278	270	248	212	189	162
6SP17/26		15 20		290	288	280	258	220	195	168

## Dimensions & weights



Model (50Hz)	Motor Model	H (mm)	L (mm)	N.W kg		E (mm)
				H	L	
6SP17/5	4SD	556	1005	9	25.6	138
6SP17/6		616	1215	10	29	
6SP17/9		798	1541	14	41.3	
6SP17/11		919	1769	16	47.4	
6SP17/12		979	1829	18	49.4	
6SP17/9	6SD	814	1416	15.5	49.5	145
6SP17/11		935	1572	18	55	
6SP17/12		995	1632	19	56	
6SP17/15		1177	1859	22.5	63.5	
6SP17/16		1237	1919	23.5	64.5	
6SP17/18		1358	2090	26.5	71	
6SP17/19		1419	2151	27.5	72	
6SP17/22		1600	2362	30.5	78	
6SP17/23		1661	2423	32.5	80	
6SP17/25		1782	2589	34.5	86.5	
6SP17/26	1842	2649	35.5	87.5		

**Stainless Steel construction designed for years of trouble free operation. Close coupled to NEMA standard submersible motor. Designed for flow rates up to 120 m<sup>3</sup>/h & head up to 310 meters.**

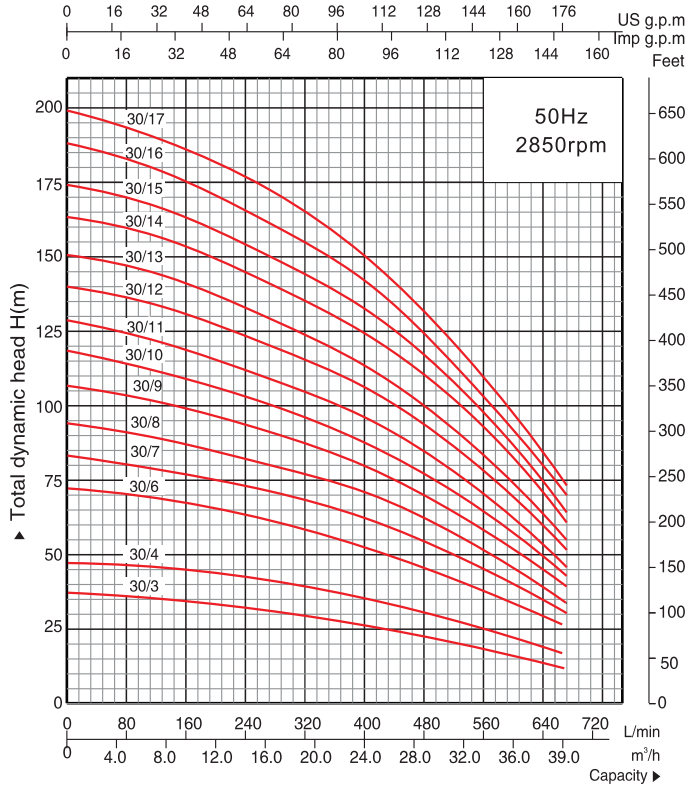


### Materials of construction

Item No.	Part name	Material
01	Discharge head	AISI304SS
14	Impeller	AISI304SS
15	Diffuser & Casing	AISI304SS
17	Adapter	AISI304SS
22	Neck ring seat	AISI304SS
24	Neck ring	NBR
25	Strainer	AISI304SS
29	Shaft	AISI420SS
38a,b	Shaft sleeve	AISI304SS
38c	Coupling spline	AISI420SS
39	Bush bearing	NBR
57	Rod & Screw	AISI304SS

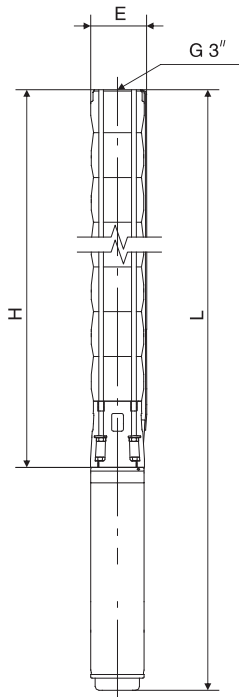


## Performance curves & table



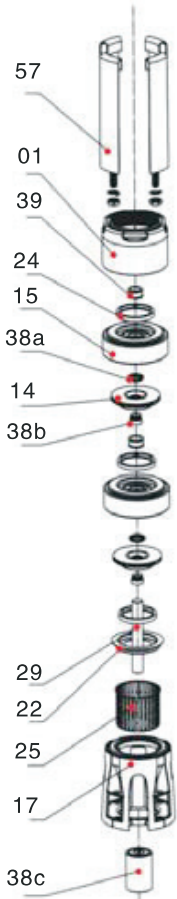
Model(50Hz)	Motor		Capacity							
	Three phase Model	Power	l/min m³/h	0	133	267	400	467	533	650
kW		HP		0	8	16	24	28	32	39
6SP30/3	4SD	3	4	35.5	33.5	30	26	24	20	12
6SP30/4		4	5.5	48	44.5	40	35	32	27	16
6SP30/6		5.5	7.5	71	67	60	53	48	41.5	25.5
6SP30/8		7.5	10	94.5	89	80	70.5	64	55.5	34
6SP30/6	6SD	5.5	7.5	71	67	60	53	48	41.5	25.5
6SP30/8		7.5	10	94.5	89	80	70.5	64	55.5	34
6SP30/9		9.2	12.5	107	101	91	80	73	63.5	39.5
6SP30/10		9.2	12.5	118	111	100	88	80	69.5	43
6SP30/12		11	15	140	133	120	106	96	83	52
6SP30/13		11	15	151	144	130	114	104	87	55
6SP30/14		13	17.5	163	156	141	124	113	98	61
6SP30/15		13	17.5	174	166	150	132	120	104	64
6SP30/16		15	20	188	179	161	142	130	112	70
6SP30/17		15	20	199	189	171	150	138	119	73

## Dimensions & weights



Model (50Hz)	Motor Model	H (mm)	L (mm)	N.W kg		E (mm)
				H	L	
6SP30/3	4SD	541	1090	8	24.6	138
6SP30/4		637	1236	10	29	
6SP30/6		829	1572	13	40.3	
6SP30/8		1021	1871	17	48.4	
6SP30/6	6SD	845	1447	15.5	49.5	145
6SP30/8		1037	1674	18	55	
6SP30/9		1133	1815	19.5	60.5	
6SP30/10		1229	1911	21.5	62.5	
6SP30/12		1421	2153	24.5	69	
6SP30/13		1517	2249	26.5	71	
6SP30/14		1613	2375	27.5	75	
6SP30/15		1709	2471	29.5	77	
6SP30/16		1805	2612	31.5	83.5	
6SP30/17		1901	2708	32.5	84.5	

**Stainless Steel construction designed for years of trouble free operation. Close coupled to NEMA standard submersible motor. Designed for flow rates up to 120 m<sup>3</sup>/h & head up to 310 meters.**

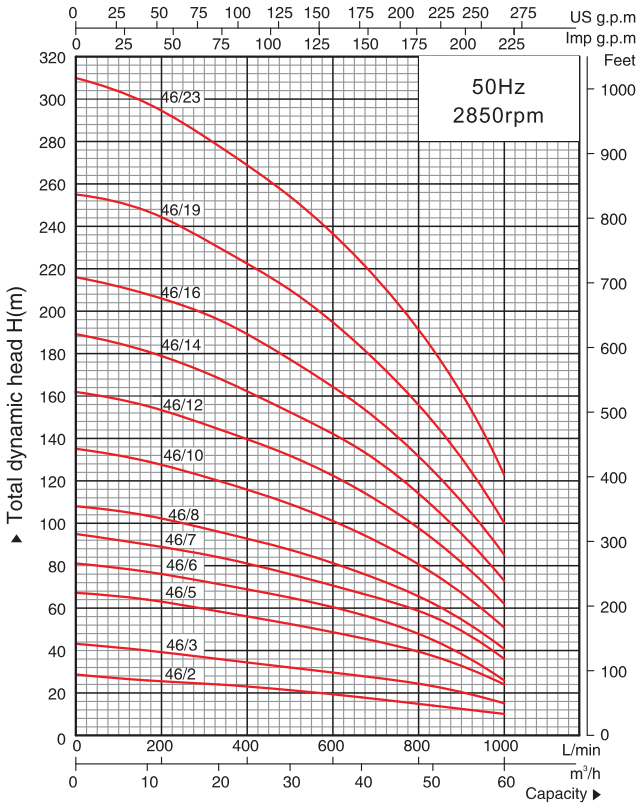


### Materials of construction

Item No.	Part name	Material
01	Discharge head	AISI304SS
14	Impeller	AISI304SS
15	Diffuser & Casing	AISI304SS
17	Adapter	AISI304SS
22	Neck ring seat	AISI304SS
24	Neck ring	NBR
25	Strainer	AISI304SS
29	Shaft	AISI420SS
38a,b	Shaft sleeve	AISI304SS
38c	Coupling spline	AISI420SS
39	Bush bearing	NBR
57	Rod & Screw	AISI304SS

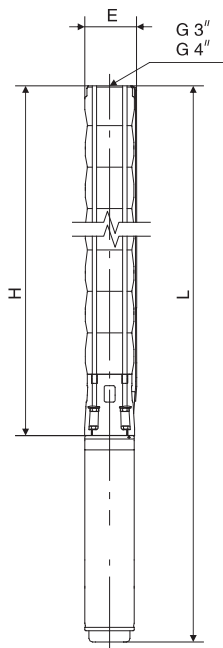


## Performance curves & table



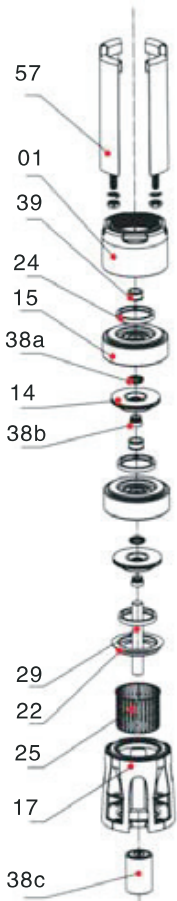
Model(50Hz)	Motor		Capacity								
	Three phase Model	Power		l/min m³/h	0	166	333	500	666	833	1000
		kW	HP		0	10	20	30	40	50	60
6SP46/2	4SD	3	4.0	Head (m)	29	25.5	23.5	21	18	16	10.5
6SP46/3		5.5	7.5		43	40	36	32	28	23	15
6SP46/5		7.5	10		67	64	59.5	52.5	47	37.5	24
6SP46/3	6SD	5.5	7.5		43	40	36	32	28	23	15
6SP46/5		7.5	10		67	64	59.5	52.5	47	37.5	24
6SP46/6		9.2	12.5		81	77	71.5	65	57	45	30
6SP46/7		11	15		95	90	84	76	66.5	56	35
6SP46/8		13	17.5		108	104	96	87.5	76.5	62	41
6SP46/10		15	20		135	129	120	109	95	76.5	51
6SP46/12	6SW	18.5	25		162	155	145	132	115	93	62
6SP46/14		22	30		189	181	169	153	134	108	73
6SP46/16		26	35		217	208	197	176	155	125	85
6SP46/19		30	40	257	247	230	210	183	148	100	
6SP46/23		37	50	310	298	278	254	223	182	123	

## Dimensions & weights



Model (50Hz)	Motor Model	H (mm)	L (mm)	N.W kg		E (mm)
				H	L	
6SP46/2	4SD	496.6	1048.6	7.1	23.4	145
6SP46/3		609.4	1462.4	9.4	40.5	
6SP46/5		835.0	1688.0	14.1	45.2	
6SP46/3	6SD	609.4	1211.4	9.4	46.4	
6SP46/5		835.0	1472.0	14.1	53.6	
6SP46/6		947.8	1629.8	16.4	57.4	
6SP46/7		1060.6	1792.6	18.7	63.2	
6SP46/8		1173.4	1935.4	21.1	68.6	
6SP46/10		1399.0	2206.0	25.7	77.7	
6SP46/12	6SW	1624.6	2481.6	30.4	86.4	
6SP46/14		1850.2	2920.2	35.0	116.0	
6SP46/16		2075.8	3190.8	39.7	125.7	
6SP46/19		2414.2	3584.2	46.9	138.9	
6SP46/23		2865.4	4065.4	56.0	163.0	

**Stainless Steel construction designed for years of trouble free operation. Close coupled to NEMA standard submersible motor. Designed for flow rates up to 120 m<sup>3</sup>/h & head up to 310 meters.**

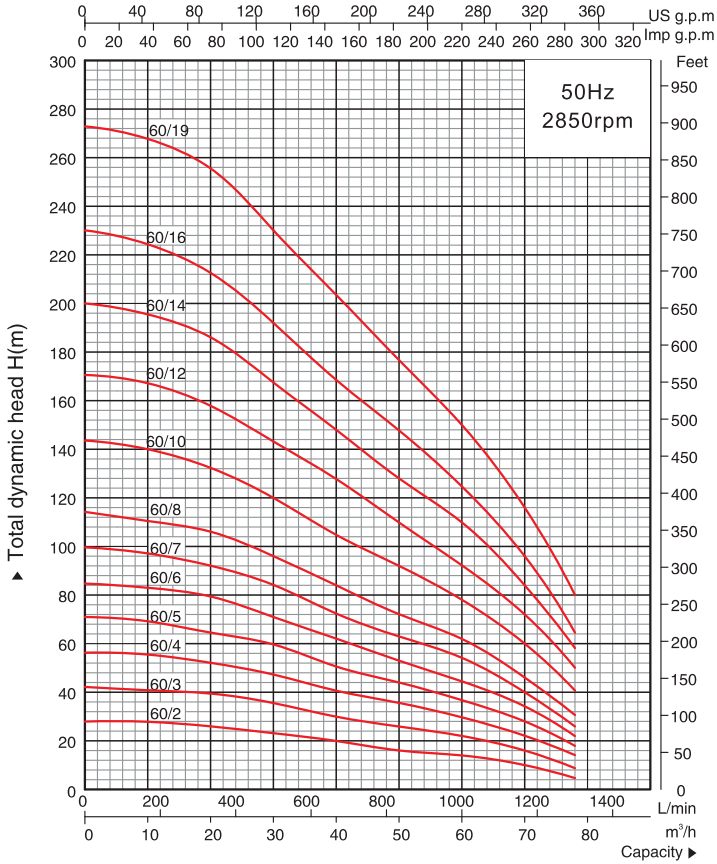


### Materials of construction

Item No.	Part name	Material
01	Discharge head	AISI304SS
14	Impeller	AISI304SS
15	Diffuser & Casing	AISI304SS
17	Adapter	AISI304SS
22	Neck ring seat	AISI304SS
24	Neck ring	NBR
25	Strainer	AISI304SS
29	Shaft	AISI420SS
38a,b	Shaft sleeve	AISI304SS
38c	Coupling spline	AISI420SS
39	Bush bearing	NBR
57	Rod & Screw	AISI304SS

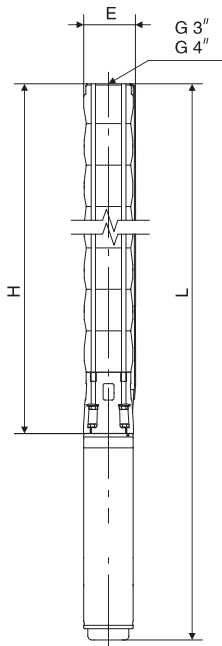


### Performance curves & table



Model(50Hz)	Motor		Capacity								
Three phase	Model	Power		l/min	0	333	500	666	833	1000	1167
		kW	HP		0	20	30	40	50	60	70
6SP60/2	4SD	4	5.5	Head (m)	27.5	26	23	19.2	16.5	14	10
6SP60/3		5.5	7.5		41.8	39	35	30	26	22	16
6SP60/4		7.5	10		56.2	52.5	47	40.5	35	30	22
6SP60/2	6SD	4	5.5		27.5	26	23	19.2	16.5	14	10
6SP60/3		5.5	7.5		41.8	39	35	30	26	22	16
6SP60/4		7.5	10		56.2	52.5	47	40.5	35	30	22
6SP60/5		9.2	12.5		70.5	65.5	59	51	44.2	37.5	28
6SP60/6		11	15		85	79	71	62	53.5	45.5	34
6SP60/7		13	17.5		99.5	92.5	84.5	72.5	63	53.5	40
6SP60/8		15	20		114	106	96	84	72.5	61.5	46
6SP60/10		18.5	25		143	133	120	106	91.8	78	60
6SP60/12		22	30		171	158	143	127	110	93	72
6SP60/14		26	35		200	186	167	148	128	110	84
6SP60/16	6SW	30	40		230	213	192	169	147	125	96
6SP60/19		37	50		273	255	230	203	177	150	116

### Dimensions & weights



Model (50Hz)	Motor Model	H (mm)	L (mm)	N.W kg		E (mm)
				H	L	
6SP60/2	4SD	496.6	1098.6	7.5	26.2	145
6SP60/3		609.4	1355.4	10.0	37.0	
6SP60/4		722.2	1575.2	12.5	43.6	
6SP60/2	6SD	496.6	1068.6	7.5	39.0	
6SP60/3		609.4	1211.4	10.0	47.0	
6SP60/4		722.2	1359.2	12.5	52.0	
6SP60/5		835.0	1517.0	15.0	56.0	
6SP60/6		947.8	1679.8	17.5	62.0	
6SP60/7		1060.6	1822.6	20.1	67.6	
6SP60/8		1173.4	1980.4	22.6	74.6	
6SP60/10		1399.0	2256.0	27.6	83.6	
6SP60/12	6SW	1624.6	2624.6	32.7	111.7	
6SP60/14		1850.2	2895.2	37.7	121.7	
6SP60/16		2075.8	3175.8	42.7	132.7	
6SP60/19		2414.2	3544.2	50.0	155.0	