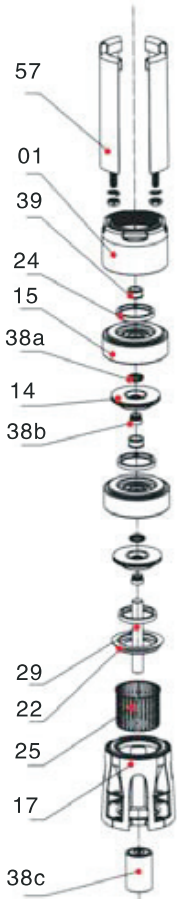


Stainless Steel construction designed for years of trouble free operation. Close coupled to NEMA standard submersible motor. Designed for flow rates up to 120 m³/h & head up to 310 meters.

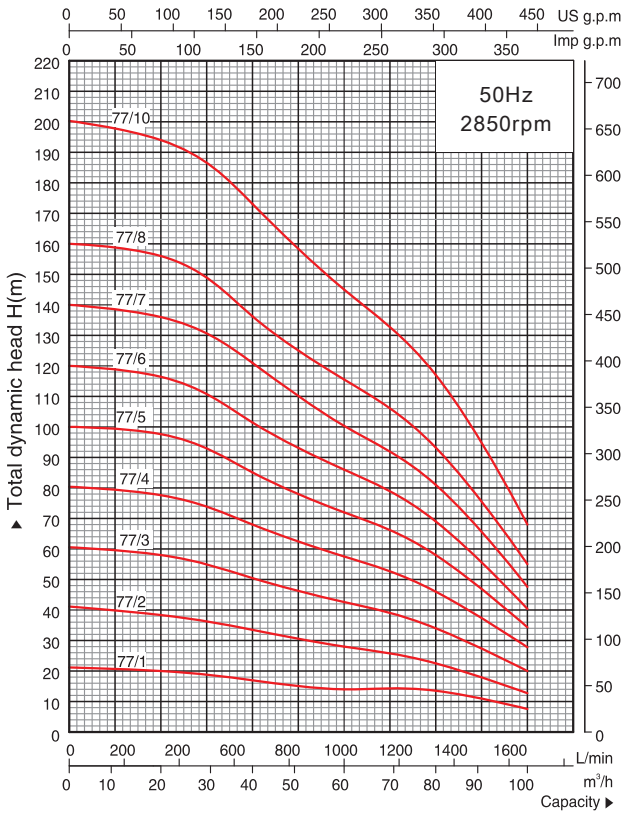


Materials of construction

Item No.	Part name	Material
01	Discharge head	AISI304SS
14	Impeller	AISI304SS
15	Diffuser & Casing	AISI304SS
17	Adapter	AISI304SS
22	Neck ring seat	AISI304SS
24	Neck ring	NBR
25	Strainer	AISI304SS
29	Shaft	AISI420SS
38a,b	Shaft sleeve	AISI304SS
38c	Coupling spline	AISI420SS
39	Bush bearing	NBR
57	Rod & Screw	AISI304SS

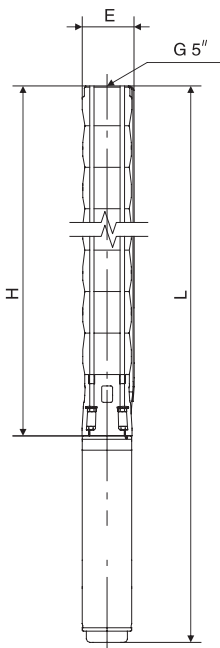


Performance curves & table



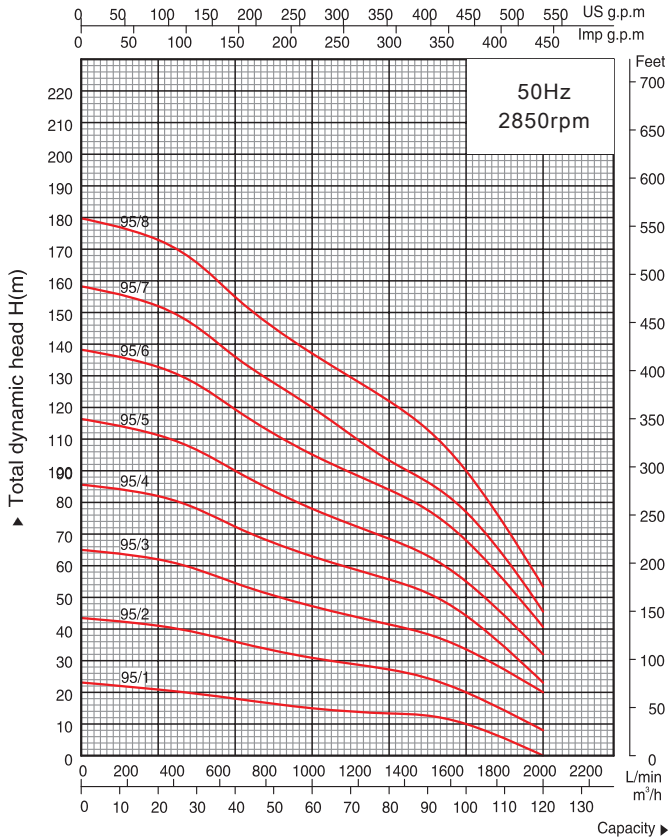
Model(50Hz)	Motor		Capacity							
	Model	Power		l/min m³/h	0	500	833	1167	1333	1500
kW		HP	0		30	50	70	80	90	100
8SP77/1	6SD	5.5	7.5	21.5	18	15.5	7.6	11.8	9.5	7.6
8SP77/2		7.5	10	41	36	30.5	13.5	22.5	18	13.5
8SP77/3		11	15	60.5	56.5	46	20	34	28	20
8SP77/4		15	17.5	80.5	73	62.3	27.5	46	38	27.5
8SP77/5		18.5	25	100	92	78	34.2	58	48	34.2
8SP77/6	6SW	22	30	120	110	93.5	40.5	69	56	40.5
8SP77/7		26	35	140	128	110	47.5	81	66	47.5
8SP77/8		30	40	160	148	126	55	93	76	55
8SP77/10		37	50	200	184	158	68	117	96	68

Dimensions & weights



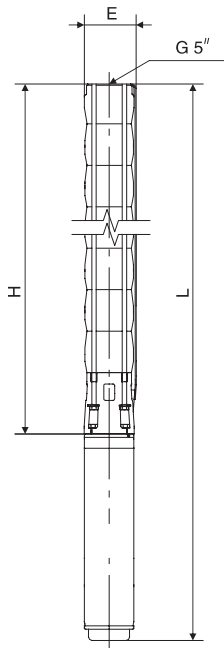
Model (50Hz)	Motor Model	H (mm)	L (mm)	N.W kg		E (mm)
				H	L	
8SP77/1	6SD	404.0	1006.0	11.7	48.7	200
8SP77/2		508.0	1145.0	15.0	54.5	
8SP77/3		612.0	1344.0	18.3	62.8	
8SP77/4		716.0	1523.0	21.6	73.6	
8SP77/5		820.0	1677.0	24.9	80.9	
8SP77/6	6SW	924.0	1924.0	28.2	107.2	
8SP77/7		1028.0	2073.0	31.5	115.5	
8SP77/8		1132.0	2232.0	34.8	124.8	
8SP77/10		1340.0	2470.0	41.4	146.4	

Performance curves & table



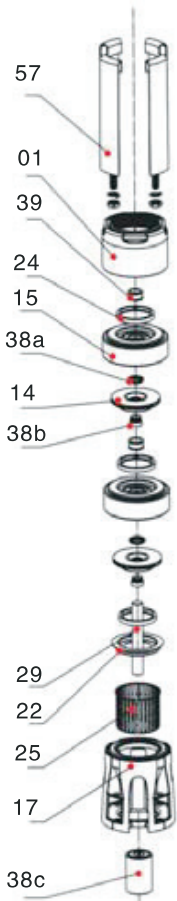
Model(50Hz)	Motor		Capacity								
	Three phase Model	Power		l/min m³/h	0	666	1000	1333	1500	1667	2000
kW		HP	Head (m)		0	40	60	80	90	100	120
8SP95/1	6SD	5.5	7.5	Head (m)	23	18	15.2	13.5	12.5	10	0
8SP95/2		9.2	12.5		43.5	36	31	27	25	20	8
8SP95/3		13	17.5		65	54.5	47	41.5	38	33.5	20
8SP95/4		18.5	25		85.8	72.5	63	55.7	51	44.3	23.8
8SP95/5	6SW	22	30		106.2	90	78	68.8	63	55	32
8SP95/6		26	35		128.5	109.5	95.5	84	77	68	40.5
8SP95/7		30	40		148.2	126	110	96.5	88	77	45.7
8SP95/8		37	50		169.5	145	127	111.5	102	89.5	53.2

Dimensions & weights



Model (50Hz)	Motor Model	H (mm)	L (mm)	N.W kg		E (mm)
				H	L	
8SP95/1	6SD	414.0	1016.0	12.6	49.6	200
8SP95/2		518.0	1200.0	15.9	56.9	
8SP95/3		622.0	1384.0	19.3	66.8	
8SP95/4		726.0	1583.0	22.6	78.6	
8SP95/5	6SW	830.0	1830.0	26.0	105.0	
8SP95/6		934.0	1979.0	29.3	113.3	
8SP95/7		1038.0	2138.0	32.7	122.7	
8SP95/8		1142.0	2272.0	36.0	141.0	

Stainless Steel construction designed for years of trouble free operation. Close coupled to NEMA standard submersible motor. Designed for flow rates up to 120 m³/h & head up to 310 meters.

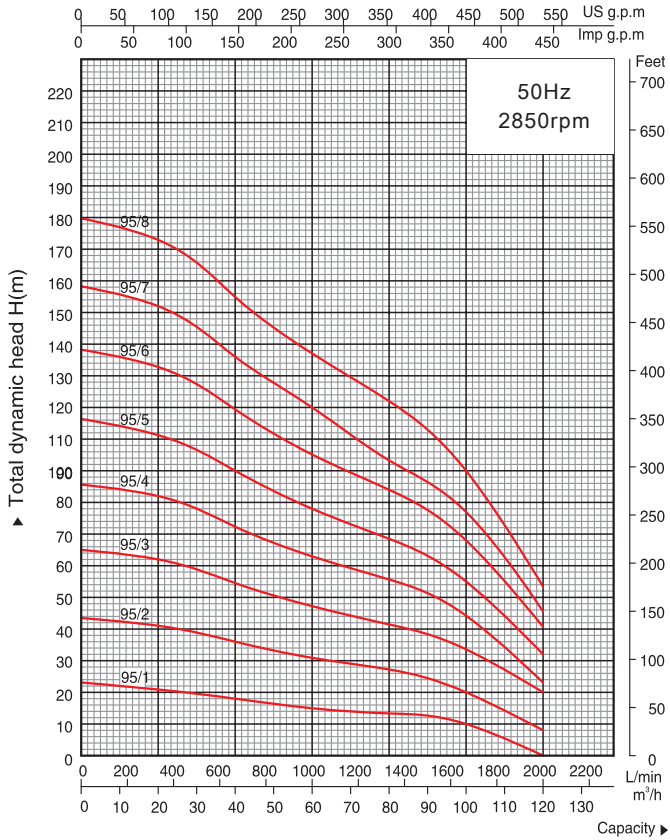


Materials of construction

Item No.	Part name	Material
01	Discharge head	AISI304SS
14	Impeller	AISI304SS
15	Diffuser & Casing	AISI304SS
17	Adapter	AISI304SS
22	Neck ring seat	AISI304SS
24	Neck ring	NBR
25	Strainer	AISI304SS
29	Shaft	AISI420SS
38a,b	Shaft sleeve	AISI304SS
38c	Coupling spline	AISI420SS
39	Bush bearing	NBR
57	Rod & Screw	AISI304SS

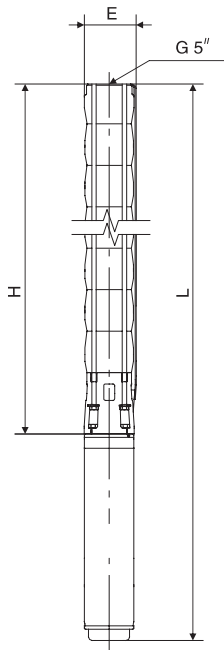


Performance curves & table



Model(50Hz)	Motor		Capacity								
	Three phase Model	Power		l/min m³/h	0	666	1000	1333	1500	1667	2000
kW		HP	Head (m)		0	40	60	80	90	100	120
8SP95/1	6SD	5.5	7.5	Head (m)	23	18	15.2	13.5	12.5	10	0
8SP95/2		9.2	12.5		43.5	36	31	27	25	20	8
8SP95/3		13	17.5		65	54.5	47	41.5	38	33.5	20
8SP95/4		18.5	25		85.8	72.5	63	55.7	51	44.3	23.8
8SP95/5	6SW	22	30		106.2	90	78	68.8	63	55	32
8SP95/6		26	35		128.5	109.5	95.5	84	77	68	40.5
8SP95/7		30	40		148.2	126	110	96.5	88	77	45.7
8SP95/8		37	50		169.5	145	127	111.5	102	89.5	53.2

Dimensions & weights



Model (50Hz)	Motor Model	H (mm)	L (mm)	N.W kg		E (mm)
				H	L	
8SP95/1	6SD	414.0	1016.0	12.6	49.6	200
8SP95/2		518.0	1200.0	15.9	56.9	
8SP95/3		622.0	1384.0	19.3	66.8	
8SP95/4		726.0	1583.0	22.6	78.6	
8SP95/5	6SW	830.0	1830.0	26.0	105.0	
8SP95/6		934.0	1979.0	29.3	113.3	
8SP95/7		1038.0	2138.0	32.7	122.7	
8SP95/8		1142.0	2272.0	36.0	141.0	