

AP-UF-RO Seawater

1000
liters/hour

AQUAPHOR

PROFESSIONAL

Floating direct ocean water intake desalination station with automatic built-in backwash.

Efficiently purifies seawater with up to 45 000 ppm (45 g/l)

World ocean salinity

Baltic sea	7 g/L
Black sea	15 g/L
World ocean	35 g/L
Mediterranean Sea	37 g/L
Red sea	41 g/L



Easy to use

✓ Direct ocean water intake

✓ Plug&Play – fully automatic

✓ Touchscreen controller

High-quality

✓ Long-lifespan membranes

✓ Super Duplex stainless steel pipes

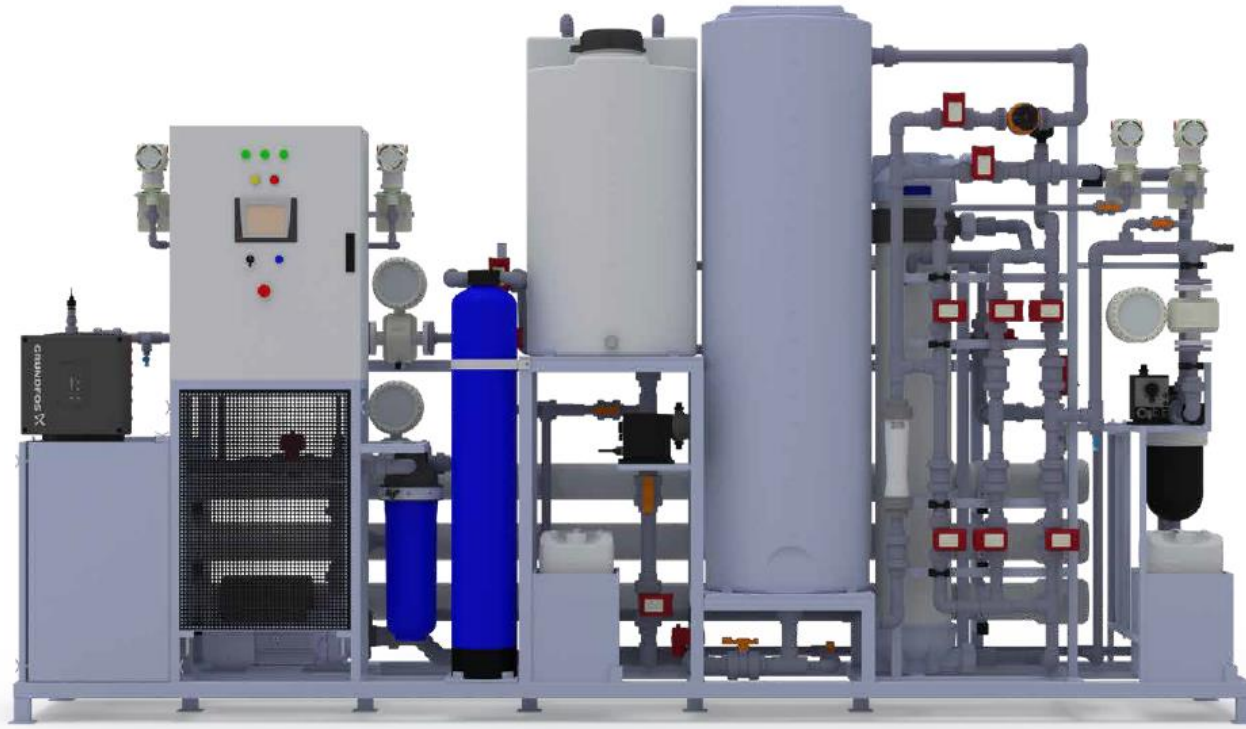
✓ Pump's VFD controller

Low-cost use

✓ Durable components

✓ Ultralow energy consumption

✓ Automatic backwash



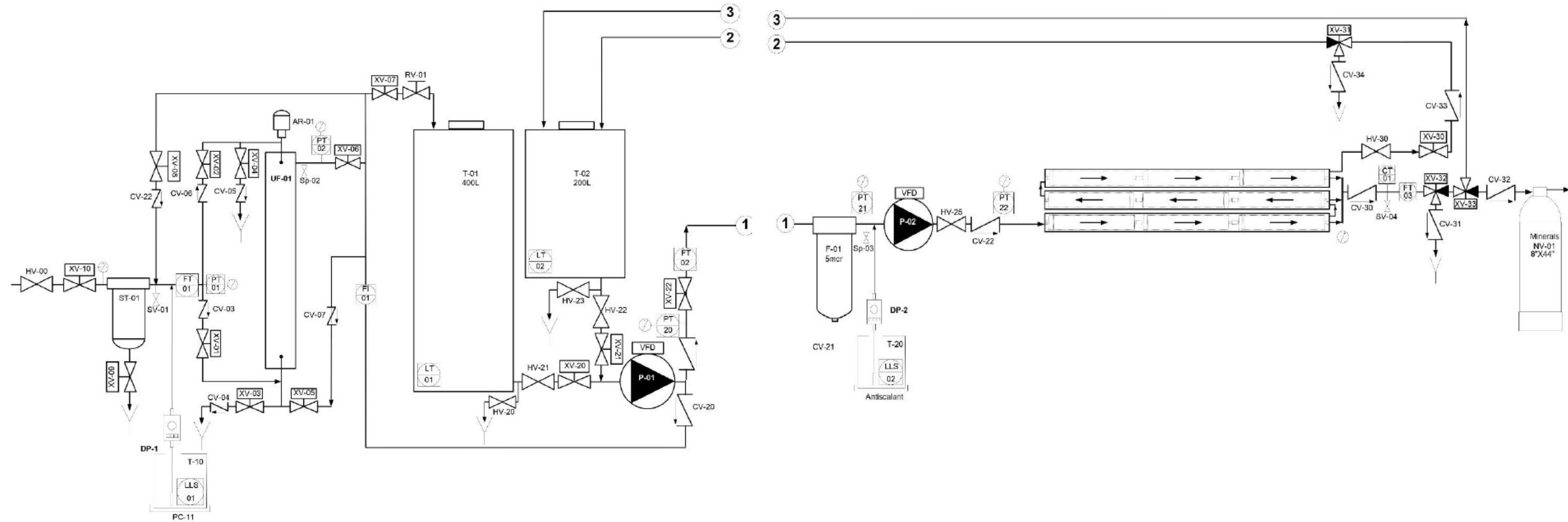
AP-UF-RO SW (Sea Water)

MODEL	AP-UF-RO SW
Operational pressure, bar	35-50
Permeate Flow, LPH	1 000 - 5 000
Max inlet TDS, ppm	45 000
Reduction of salt content, %	up to 95
System recovery, %	up to 60
Power supply	three-phase 400V, 50Hz

AQUAPHOR

PROFESSIONAL

Process Flow Diagram

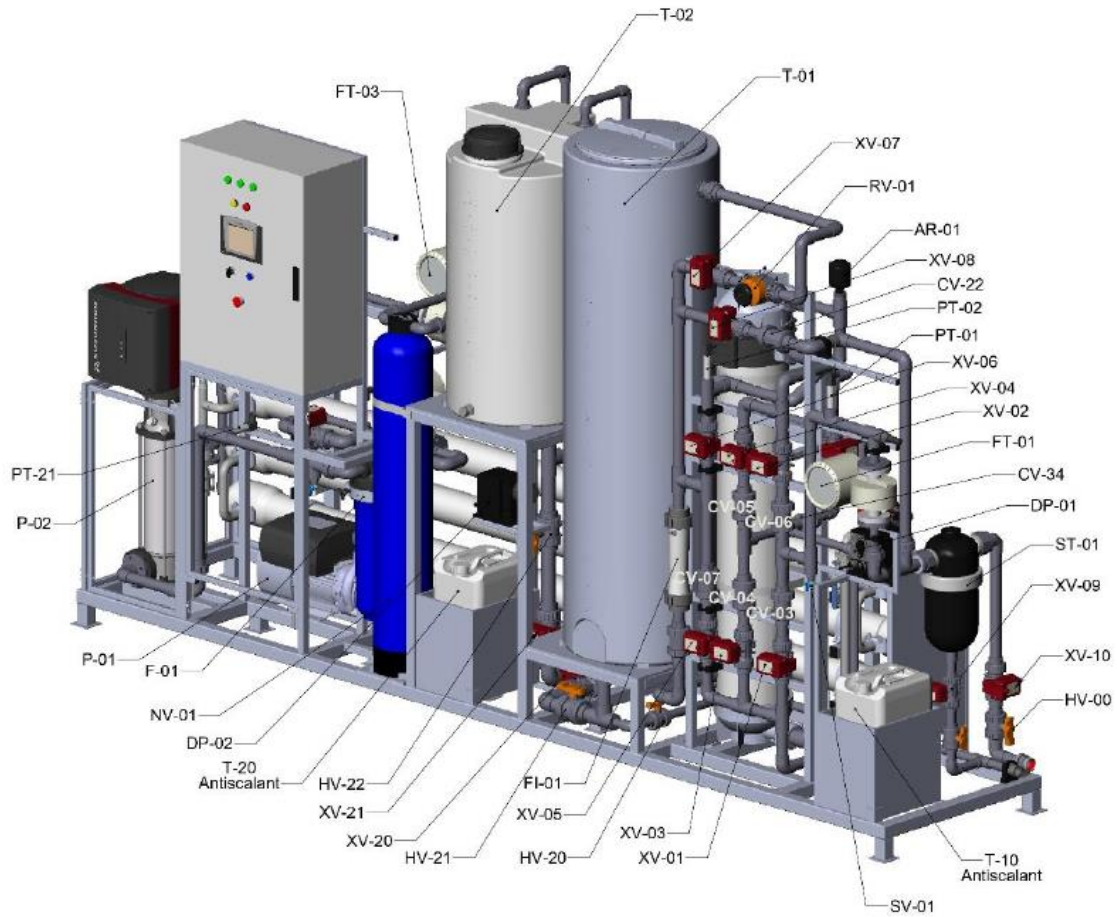


Pre-treatment

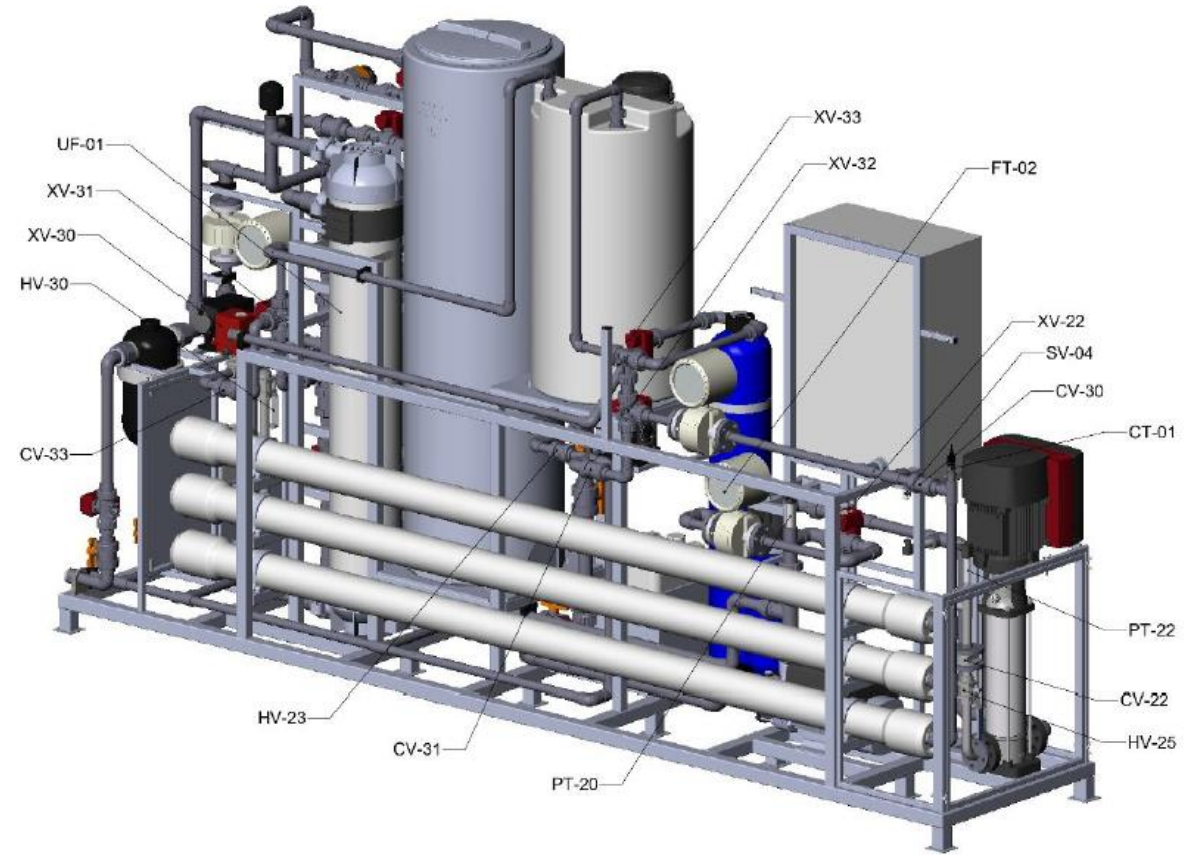
Desalination

AQUAPHOR

PROFESSIONAL



Front view



Rear view